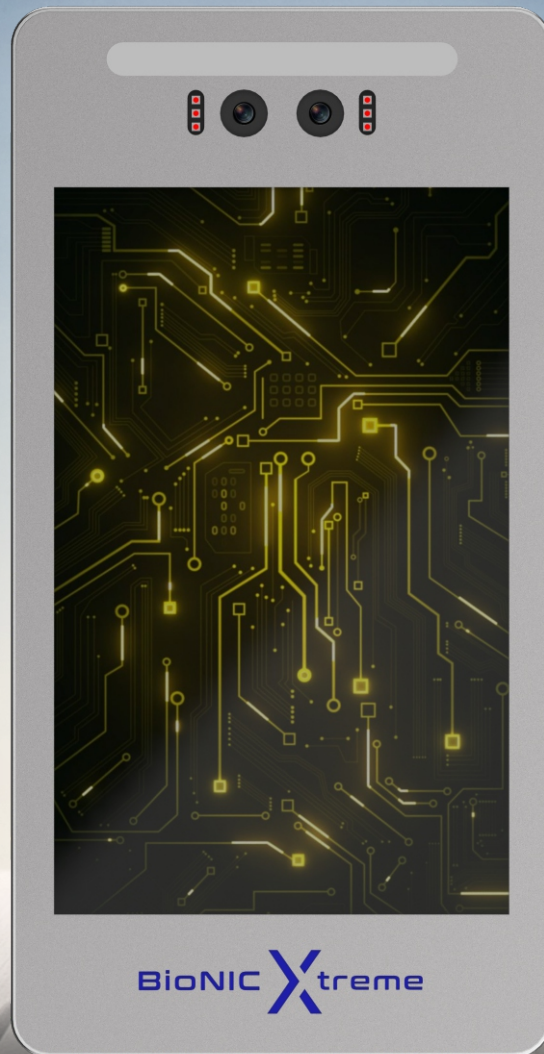


MANTRA

BioNIC Xtreme XII

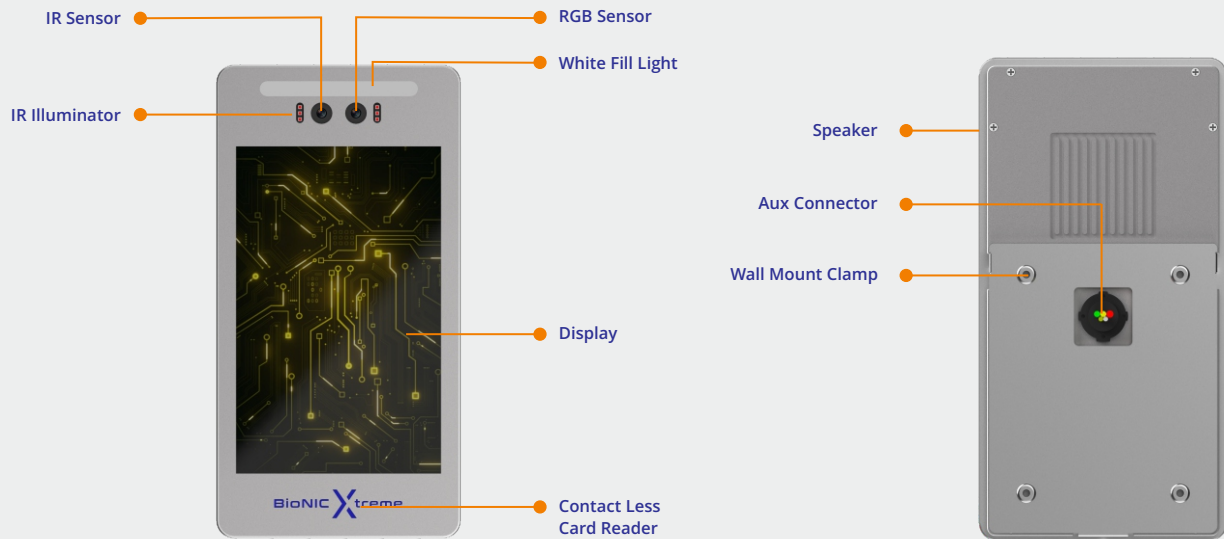
ENTERPRISE FACIAL TERMINAL

BioNIC Xtreme marks a breakthrough in security technology, using deep learning and an advanced AI processor (NPU) for ultra-precise and fast facial recognition. Discover the future of security with BioNIC Xtreme.



BioNIC **X**treme

FACE RECOGNITION SYSTEM



Introduction

Mantra's Enterprise Facial Terminal BioNIC Xtreme™ is laced with all the latest specifications and has a minimalistic and functional interface. This contactless facial device features anti-spoofing technology that surpasses all your expectations in terms of performance. BioNIC Xtreme is easy to install and configure, so you can put it to use immediately. The device is fully geared to give your company a technological edge in attendance & access control.

Main Features

IP65

Dual RGB and Near Infrared Camera
2 Million WDR Pixel Resolution

2GB RAM + 16GB eMMC

Certifications

2.2GHz Quad core ARM Cortex-A73

ISO14443
Type A/B Cards, MIFARE Classic / DESFire

Liveness Check Passed

10.1 Inch, Vertical Screen
Multi point capacitive touch screen with tuffen glass



PRODUCT MODEL	PRODUCT NAME	PRODUCT CODE	DESCRIPTION
BioNIC Xtreme™	BioNIC Xtreme XII	BX101XX1X	10.1"/Face/Android
		BX101X11X	10.1"/Face/4G/Android

Specification



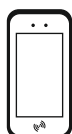
Hardware & System

CPU	: 2.2GHz Quad core ARM Cortex-A73 and 1.8GHz dual core Cortex-A53
GPU	: ARM G52 MP4 GPU
Memory (RAM + Storage)	: 2GB + 16GB



Display & Touch

Display	: 10.1 Inch, 800X1280 Resolution, Full view IPS TFT Display
Touch	: Multi point capacitive touch screen with tuffen glass



Interface

Network Module	: 1x RJ45, 10M/100M
Wi-Fi / BT	: Supported
Microphone	: Diameter of Microphone ~1cm
Speaker	: 8O/2W * 1 with 50cm cable.
RS232	: 1 x RS232
RS485	: 1 x RS485
USB OTG	: USB type A * 1
Wiegand Interface	: 1 x Output ; 1 x Input
Relay Interface	: 2 x Relay (NC, NO, COM)
Power Jack	: DC 12V/2A
Supervised Input (Configurable)	: 1.Egress Switch, 2.Fire Alarm , 3.Emergency Switch
Supervised Output (Configurable)	: 1.Alarm
RTC	: Supported
PoE	: Supported
4G Module (Optional)	: Nano SIM card slot

Specification



Smart Card Reader

Contactless Card (Optional)	: ISO14443 Type A/B Cards, Mifare Classic / Desfire
Contact Card Slot (Optional)	: ISO 7816 A/B/C, Supported



Binocular Wide Dynamic Camera (RGB + IR)

Camera Type	: Dual RGB and Near Infrared Camera
Pixel Resolution	: 2M (1920 x1080)
Frame Rate	: 30 FPS
Minimum Illumination	: = 0.1 LUX
Dynamic Range	: = 45dB Linear & = 100 dB HDR supported for various light environment
Focus Distance	: 30 -150 cm
White Balance	: Auto
Photo Flood Light	: Visible & IR dual Flood Light
Support	: Live Face Detection



Functions/Features

Face Detection	: Supported Face Recognition with Mask
Face Database Capacity	: 50,000
Users & Log Capacity	: 1M
1:N Face Recognition	: Supported (5K,10K, 20K, 50K)
1:1 Face-matching	: Supported (50K)
Stranger Detection	: Supported
Face Recognition Accuracy	: Normal Light Condition > 99.9% / External Light Condition > 95%
Liveness Detection	: Supported
Recognition Speed	: 300 ms



Software

Operating System	: Customized Android
SDK	: Appropriate SDK for all accessories to be provided

Specification



General Parameter

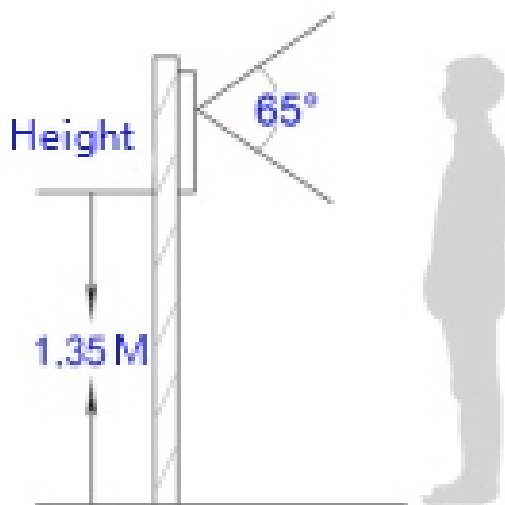
Casing	: Die-Casted
Protection Grade	: Dust & Water Proof
Operating Temperature	: -10°C~60°C
Storage Temperature	: -20°C~60°C
Operating Humidity	: 10%-90% RH (Non-Condensing)
Dimensions	: ~313 X 161 X 29 mm
Weight	: ~1.5 Kg
Mounting Type	: Wall-mounted /Pole-Mounted/e-Gate



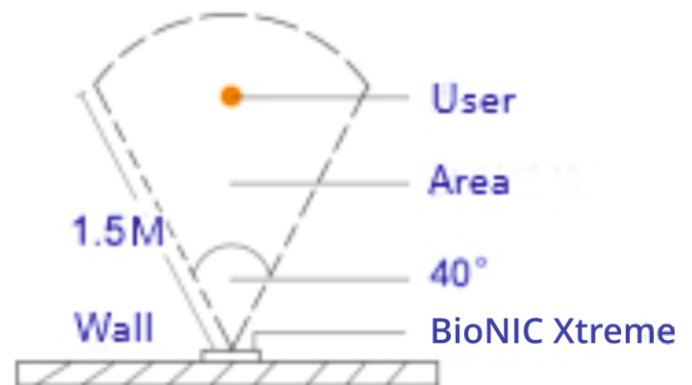
Certifications

Certifications	: CE, RoHS, IP65, FCC, UL, IK09, EN , IEC
----------------	---

Vertical Wide Angle



Horizontal Wide Angle



MANTRA

www.mantratec.com



MANTRA

www.mantratec.com

Support : servico@mantratec.com

Sales : sales@mantratec.com

Copyrights Mantra Softech (India) Pvt Ltd. All Rights Reserved.